



SK-C
AIR-SYSTEM
CHIMNEYS

The EIMAC SK-606, SK-626, SK-636B, and SK-646 Air-System Chimneys are intended for use with those tube and socket combinations listed below.

They are used to direct cooling air into the anode radiator on the tube types listed.

The SK-636B is also designed to hold the tube in use in place by means of a clamping band around the tube's radiator.

MATERIALS

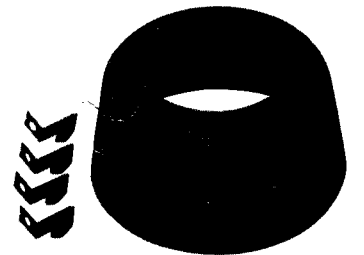
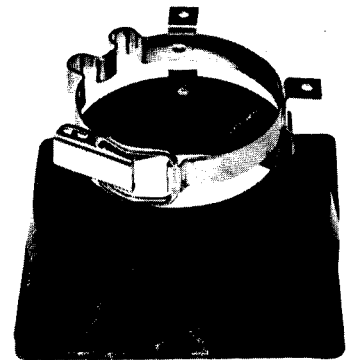
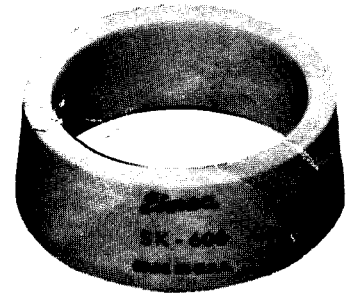
The SK-606 and SK-626 are made of high-temperature ceramic. The SK-636B is molded of diallyl meta-phthalate, and the clamping band is of beryllium copper. A neoprene "O" ring is furnished in a recess at the bottom of the chimney to more effectively seal the chimney to the socket. The SK-646 is molded of silicone resin glass fiber.

INSTALLATION

The SK-606 and SK-626 ceramic chimneys are installed by slipping them over the tube's radiator. They are held in place by their own weight or by a suitable clamping means.

The SK-646 also slips over the tube's radiator, and four clips are provided to secure the chimney in position.

The SK-636B is secured to the chassis over the companion Air-System Socket by means of four #6 screws (not provided). The clamping band includes two solder lugs to facilitate making electrical contact to the tube anode.



CHIMNEY/TUBE/SOCKET COMBINATIONS

Chimney	Socket	Tube	Chimney	Socket	Tube
SK-606	SK-600	7203/4CX250B	SK-646	SK-607	8809/4CX600J
	SK-600A	8957/4CX250BC	SK-646	SK-600	8930
	SK-610	8621/4CX250FG		SK-600A	
	SK-610A	7580W/4CX250R		SK-610	
	SK-640	8321/4CX350A		SK-610A	
SK-626 SK-636B	SK-620	8322/4CX350F		SK-640	
	SK-620A	8904/4CX350FJ	SK-606	SK-700	8167/4CX300A
	SK-630	7034/4X150A		SK-710	8561/4CX300Y
	SK-630A	7609		SK-710A	
				SK-711	
			SK-711A		

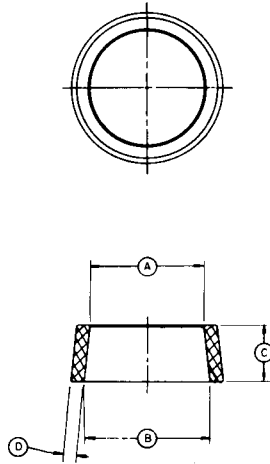
Net Weight (approximate) SK-606, SK-626, SK-636B 1.4 oz; 49.5 gms
SK-646 2.7 oz; 76.5 gms

(Effective 11-1-74) © 1963, 1966, 1974 Varian

Printed in U.S.A.

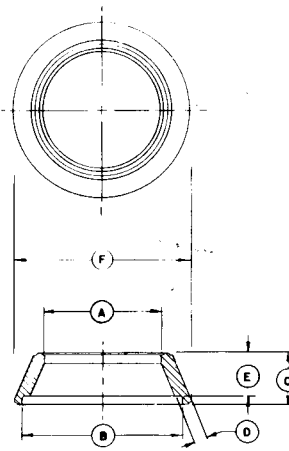
626, SK-636B, SK-646

DIM	INCHES		MILLIMETERS	
	MIN	MAX	MIN	MAX
A	1.635	1.700	41.53	43.18
B	1.781	.881	45.24	47.78
C	0.812	0.875	20.62	22.23
D	0.156	0.218	3.96	5.54



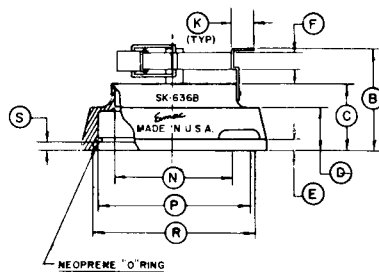
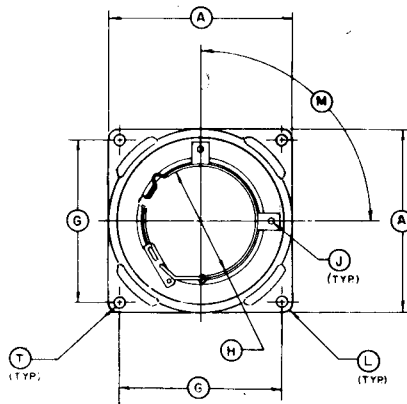
SK-606

DIM	INCHES		MILLIMETERS	
	MIN	MAX	MIN	MAX
A	1.650	1.720	41.91	43.69
B	2.300	2.362	58.42	60.00
C	0.698	0.738	17.73	18.75
D	0.156	0.218	3.96	5.54
E	0.573	0.613	14.55	15.57
F	-	2.560	-	65.02

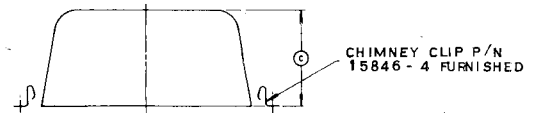
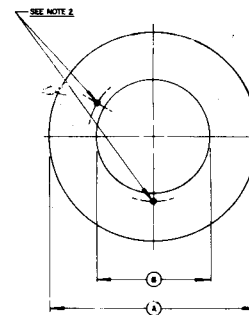


SK-626

DIM	INCHES			MILLIMETERS		
	MIN	MAX	REF	MIN	MAX	REF
A	2.609	2.641	-	66.27	67.08	-
B	1.607	1.677	-	40.82	42.60	-
C	1.109	1.141	-	28.17	28.98	-
D	0.560	0.600	-	14.22	15.24	-
E	0.155	0.187	-	3.94	4.75	-
F	0.219	0.281	-	5.56	7.14	-
G	2.335	2.365	-	59.31	60.07	-
H	1.580	1.620	-	40.13	41.15	-
J	0.083	0.103	-	2.11	2.62	-
K	0.281	0.343	-	7.14	8.71	-
L	-	-	1/8 R	-	-	3.18 R
M	-	-	90°	-	-	90°
N	1.651	1.661	-	41.94	42.19	-
P	2.306	2.340	-	58.57	59.44	-
R	2.480	2.510	-	63.00	63.75	-
S	0.111	0.121	-	2.82	3.07	-
T	0.151	0.161	-	3.84	4.09	-



DIM	INCHES		MILLIMETERS	
	MIN	MAX	MIN	MAX
A	3.720	3.785	94.49	96.14
B	2.087	2.100	53.00	53.34
C	1.703	1.735	43.26	44.07



- NOTES
- MATL. CHIMNEY, GLASS FIBER, REINFORCED SILICONE RESIN. (MAX. TEMP. 370°C)
CHIMNEY CLIP, BE-CU ALLOY NO. 172, (CADMIUM PLTD.)
 - THE TWO HOLES NOTED HAVE NO FUNCTION WITH THIS CHIMNEY.

- NOTES
- STRAP & BRACKETS OF CLAMP - MATL BE CU SILVER PLATED
 - CHIMNEY MATL DIALYL META-PHTHALATE
 - CLAMP PROVIDES A MIN. 3 LBS. RETENTION ON A 1.625 DIA. TUBE

SK-636B

SK-646